

2019 / BLACK EAGLE ARROWS

BLACKEAGLEARROWS.com

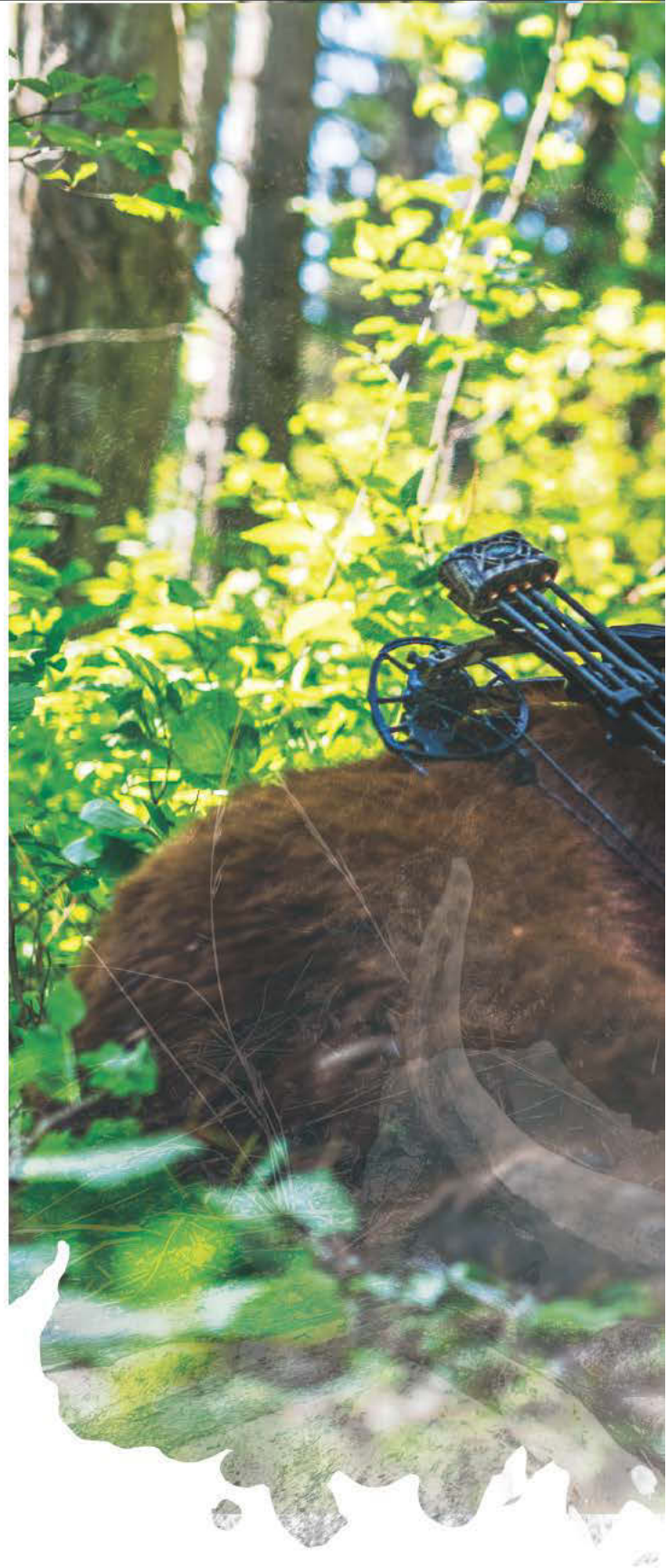
SUPERIOR QUALITY CARBON ARROWS
PRODUCT CATALOG / 2019



152 Bluffs Court, Canton, GA. 30144

INFO@BLACKEAGLEARROWS.COM

[678] 208-3429



BLACKEAGLEARROWS.com

THE ONLY **PRO SHOP** **EXCLUSIVE** ARROW COMPANY

HOW DOES IT WORK?

Our business model is simple, we provide our Black Eagle Arrows Authorized Retailers the opportunity to **MAXIMIZE VALUE AND CUSTOMER SERVICE BY ELIMINATING BIG-BOX STORE COMPETITION.** This gives every retailer in our network the best product pricing instead of pricing models which require pro shops to subsidize their competition. We are the only arrow company in the industry who sustains these values. We have worked to build and maintain a trusted network of only independently owned and operated pro shops. With no minimums and superior customer service we give every pro shop large and small the opportunity to thrive. We work hard at producing quality products and just as hard at building quality relationships with our partners.



GREAT LAKES OUTDOOR SUPPLY
BAINBRIDGE, MADISON,
MIDDLEFIELD, CHESTERLAND

"For us at Great Lakes the choice to sell and support Black Eagle Arrows was simple when they offer an arrow with unmatched weight and straightness tolerances coming from genuine people that aren't just business partners, but our friends as well."



LANCASTER ARCHERY SUPPLY
LEOLA, PA

"We have been a Black Eagle Arrow distributor since 2012 as it was a natural fit with their commitment to innovating and building the best arrows for both 3D target and bow hunting."



XXX ARCHERY
RAINIER, OR

"Your bow is only as good as your arrow that's why I shoot and sell Black Eagle Arrows. They have the best tolerances and the best value in the industry."



SOUTH SHORE ARCHERY SUPPLY
RIVERVIEW, FLORIDA

"Little did I know [becoming a dealer] was one of the best business moves I had made in the 12 years of running South Shore. I am proud to be a dealer of Black Eagle arrows."

DEALER APPLICATION



DEALER INFORMATION

BUSINESS NAME

BUSINESS ADDRESS

CITY STATE ZIP CODE

PHONE MOBILE

TAX I.D. NUMBER

FAX

EMAIL

DATE OF INCORPORATION

BILLING INFORMATION

BUSINESS NAME

BUSINESS ADDRESS

CITY STATE ZIP CODE

I/We the undersigned declare that the above application is true and correct and agree to the Terms and Conditions as outlined in the current dealer price list. I/We accept the Trading Terms its being strictly COD/CC unless otherwise agreed with an Authorized Officer of Black Eagle Arrows LLC. I/We are personally guarantee to pay in full for any goods which have been received by the above mentioned and are held personally liable for any outstanding debts at any stage.

To maintain an exclusive authorized Black Eagle Arrow dealership protected area, you must have a store front and purchase a minimum of \$10,000 annually in Black Eagle Arrow products.

NAME

REFERRED BY

POSITION

PHONE

SIGNATURE / DATE

SEND VIA EMAIL

TAKE A PHOTO OF THE APP AND SEND TO:
DEALERINQUIRY@BLACKEAGLEARROWS.com

BLACK EAGLE ARROWS, LLC.

152 Bluffs Court
Canton, GA. 30144

T: (678) 208-3429
F: (678) 716-2336
E: Info@BLACKEAGLEARROWS.com

PLEASE ATTACH A COPY OF YOUR VENDORS LICENCE ALSO

CARNIVORE

19/64" - HUNTING ARROWS



FLETCHED & SHAFTS

The Carnivore is our premium **100% carbon hunting / 3-D shaft**. It's flight characteristics were designed by experienced professional shooters to optimize speed, kinetic energy, and penetration for a wide range of environments. The Carnivores are each weight-sorted and spine-matched to offer the most consistent grouping. This shaft's exceptional durability and accuracy is sure to bring home the trophy.

.001 & .003" OR STRAIGHTER

± 1 GRAIN WEIGHT TOLERANCE

32" SHAFT LENGTH





SPECS / INCLUDED COMPONENTS

SPINE	INNER DIAMETER	OUTER DIAMETER	GPI
250	.2445"	.303"	9.7
300	.2445"	.296"	8.5
350	.2445"	.291"	7.5
400	.2445"	.287"	6.8

- Black Eagle Arrows Standard Nock - 10 Grains
- Carnivore Inserts - 14 Grains
- Bohning Blazer Vanes - 18 Grains (Fletched Only)

ULTRA-LIGHT ARROWS SPECS*

SPINE	INNER DIAMETER	OUTER DIAMETER	GPI
30-50 lb	.2445"	.281"	5.9

Perfect for those who shoot a lighter 30-50 lb draw weight.

*DISCLAIMER / Do not exceed 50 lb draw weight limit. It may damage the shaft and cause serious injury to you or others around you.



ZOMBIESLAYER

19/64" - HUNTING ARROWS



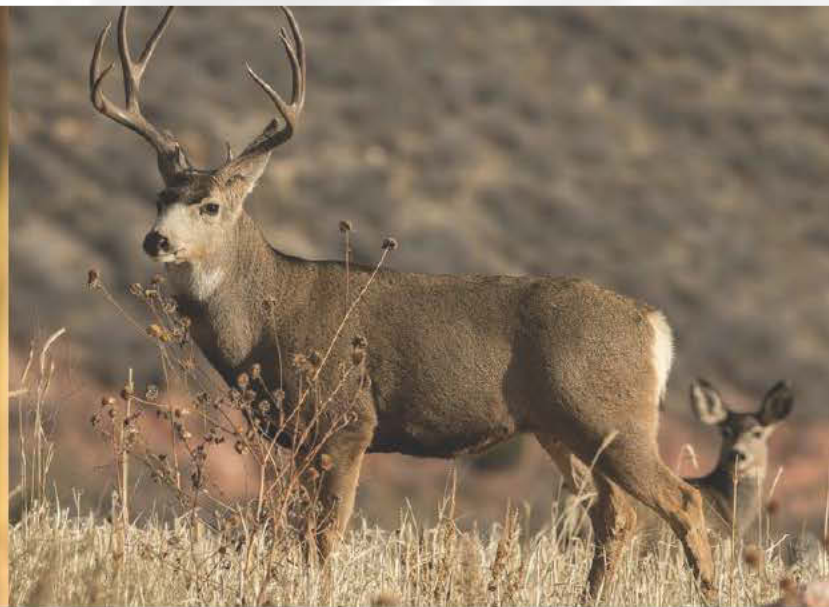
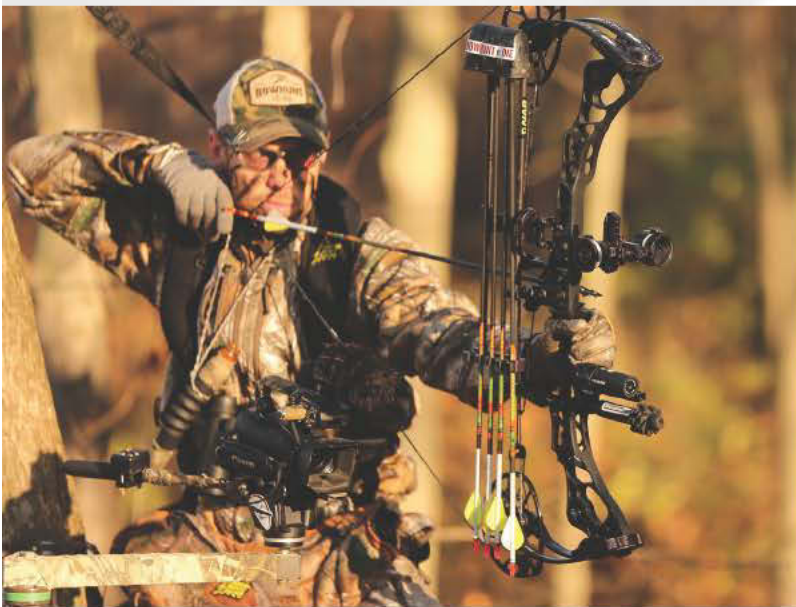
FLETCHED & SHAFTS

Zombie Slayers are a 100% carbon hunting / 3-D shaft. These shafts are engineered with speed and kinetic energy, designed to cause the maximum zombie face damage. These carbon Zombie Slayer arrows are manufactured with the tightest .001" or .003" straightness or straighter tolerances, to ensure you never miss that critical head shot.

.001 & .003" OR STRAIGHTER

± 1 GRAIN WEIGHT TOLERANCE

32.5" SHAFT LENGTH



ZOMBIE SLAYERS ARE NOT TOYS. THESE ARE REAL ARROWS AND CROSSBOW BOLTS INTENDED ONLY FOR REAL ZOMBIES, WALKERS, LIVING DEAD, ETC. NOT FOR USE ON LIVING HUMANS.



SPECS / INCLUDED COMPONENTS

SPINE	INNER DIAMETER	OUTER DIAMETER	GPI
300	.2445"	.298"	9.2
350	.2445"	.293"	8.0
400	.2445"	.291"	7.5
500	.2445"	.286"	6.7

Note: Cresting adds .01 GPI.

- Available with fluorescent yellow cresting or bare carbon finish shafts
- Black Eagle Arrows Standard Nocks - 10 Grains
- Zombie Slayer Inserts - 14 Grains
- Bohning Blazer Vanes - 18 Grains (Fletched Only)



OUTLAW

19/64" - HUNTING ARROWS



CRESTED FLETCHED & SHAFTS

The **Outlaw 100% carbon arrow** was created for the hunter looking for the ultimate in strength and durability. This shaft provides the highest level of performance with a focus on affordability. This versatile shaft is the perfect choice for any serious hunter.

.005" OR STRAIGHTER

± 1 GRAIN WEIGHT TOLERANCE

32" SHAFT LENGTH



OUTLAW CRESTED



OUTLAW PINK





SPINE	INNER DIAMETER	OUTER DIAMETER	GPI
300	.2445"	.300"	9.1
350	.2445"	.297"	8.6
400	.2445"	.294"	8.1
500	.2445"	.285"	7.4
600	.2445"	.278"	6.8

Note: Outlaw Pink available in 400, 500, 600, 700 spines only.

- Available with fluorescent yellow, white crestring, or bare carbon finish

Note: Cresting only available in 300, 350, and 400 spines

- Black Eagle Arrows Standard Nocks - 10 Grains
- Outlaw Inserts - 14 Grains
- Bohning Blazer Vanes - 18 Grains (Fletched Only)



OUTLAW TRADITIONAL FEATHERS



VINTAGE

19/64" - TRADITIONAL HUNTING ARROWS

CRESTED FLETCHED & SHAFTS

Our **Vintage® 100% carbon arrow** is the first of its kind on the market. Many serious traditional archers, and compound archers, are looking for a high quality wood grain carbon arrow – so we delivered. Each Vintage arrow's cresting is hand painted and quality inspected. The Duracoat wood grain overlay-finish on the shaft allows for refletching and cresting. Vintage arrows are straightness sorted, spine matched, and weight matched to ensure the quality and toughness that you have come to expect.

.005" OR STRAIGHTER

± 1 GRAIN WEIGHT TOLERANCE

34" SHAFT LENGTH



CRESTED OPTIONS





TRADITIONAL HUNTING ARROWS

SPINE	INNER DIAMETER	OUTER DIAMETER	GPI
350	.244"	.303"	9.8
400	.244"	.301"	9.2
500	.244"	.297"	8.5
600	.244"	.293"	7.9

Note: Cresting adds .01 GPI.

- Black Eagle Arrows Standard Nock - 8 Grains
- Aluminum Inserts - 14 Grains
- 4" Feathers Barred and Solid - 3 Grains (Fletched Only)



CRESTED OPTIONS



INSTINCT



15/64" - TRADITIONAL HUNTING ARROWS



CRESTED, FLETCHED & SHAFTS

Our Instinct® arrow is the ONLY wood-grain-micro-diameter-carbon-traditional arrow on the market today. Designed to be more shootable, the Micro-Diameter size helps to offset the off-center design of most recurve and longbow risers made today. We also coupled the Instinct® with our SUPER TOUGH Stainless Steel outserts, that weigh 100 grains, so you can have the weight up front where you want it.

Each Instinct® arrow's cresting is hand painted and quality inspected. This gives you custom arrow quality, and an attractive traditional look, all at a VERY affordable price. The Duracoat wood grain overlay-finish on the shaft allows for refletching and cresting. Instinct® arrows are straightness sorted, spine matched, and weight matched—to ensure the quality and toughness that you have come to expect from Black Eagle Arrows. We feel that traditional archers should no longer have to use traditional arrows. Test your Instincts® and experience the Black Eagle difference today!

.005" OR STRAIGHTER

± 1 GRAIN WEIGHT TOLERANCE

34" SHAFT LENGTH



CRESTED OPTIONS





TRADITIONAL HUNTING ARROWS

SPINE	INNER DIAMETER	OUTER DIAMETER	GPI
350	.165"	.248"	10.6
400	.165"	.240"	9.4
500	.165"	.236"	8.8
600	.165"	.231"	7.9

Note: Cresting adds .01 GPI.

- Black Eagle Arrows M Nock - 6 Grains
- Stainless Steel Outserts - 100 Grains
- 3" Shield Cut Feathers | Barred and Solid - 3 Grains



CRESTED OPTIONS



SPARTAN

18/64" - HUNTING ARROWS



CRESTED, FLETCHED & SHAFTS

The Spartan was developed from taking the best characteristics from larger 19/64" and smaller 17/64" arrows. We wanted the Spartan's outside diameter to be small for maximum accuracy and penetration. However, like larger arrows, we wanted the **100% carbon Spartan** to utilize an insert for easier arrow removal and to reinforce the front of the arrow for bone-shattering impacts.

.001 & .003" OR STRAIGHTER

± 1 GRAIN WEIGHT TOLERANCE

32" SHAFT LENGTH



Products are protected by United States Patent Nos. 7,004,859; 7,720,618; 7,374,504 and 7,608,001. Manufactured under license.



SPINE	INNER DIAMETER	OUTER DIAMETER	GPI
250	.224"	.289"	10.0
300	.224"	.282"	9.0
350	.224"	.276"	8.0
400	.224"	.272"	7.2
500	.224"	.268"	6.4

Note: Cresting adds .01 GPI.

- Black Eagle Arrows R Nock - 9 Grains
- Spartan Stainless Steel Nock Bushings - 10 Grains
- Spartan Stainless Steel Inserts - 26 Grains
- Bohning Blazer Vanes - 18 Grains (Fletched Only)



RAMPAGE

17/64" - HUNTING ARROWS



FLETCHED & SHAFTS

This small-diameter **100% carbon shaft** is designed to have superior long distance performance with spine-to-weight ratios creating a balance for optimal speed, kinetic energy, and penetration. The Rampage is an exceptional hunting arrow with no sacrifices to durability. It's the perfect shaft for any big game.

.001 & .003" OR STRAIGHTER

± 1 GRAIN WEIGHT TOLERANCE

32" SHAFT LENGTH



Products are protected by United States Patent Nos. 7,004,859; 7,720,618; 7,374,504 and 7,608,001. Manufactured under license.



SPINE	INNER DIAMETER	OUTER DIAMETER	GPI
150	.204"	.307	16
250	.204"	.276"	10.7
300	.204"	.264"	8.7
350	.204"	.261"	8.2
400	.204"	.253"	7

Note: Cresting adds .01 GPI.

- Black Eagle Arrows R Nocks - 9 Grains
- Stainless Steel Bone Crusher Half-Out - 56 Grains
- Bohning Blazer Vanes - 18 Grains (Fletched Only)



RENEGADE

17/64" - HUNTING ARROWS



CRESTED FLETCHED & SHAFTS

The Renegade was designed specially for hunters who want a supremely accurate small diameter carbon arrow that is tough as nails - at a great price. This **100% carbon shaft** was designed to eliminate cross-wind drift, so it's perfect for those long-range shots. The flight characteristics of this extremely durable shaft ensure maximum power down range.

.005" OR STRAIGHTER

± 2 GRAIN WEIGHT TOLERANCE

32.5" SHAFT LENGTH



Products are protected by United States Patent Nos. 7,004,859; 7,720,618; 7,374,504 and 7,608,001. Manufactured under license.



SPINE	INNER DIAMETER	OUTER DIAMETER	GPI
250	.204"	.280"	10.8
300	.204"	.275"	10
350	.204"	.267"	8.7
400	.204"	.263"	8

Note: Cresting adds .01 GPI.

- Black Eagle Arrows R Nocks - 9 Grains
- Stainless Steel Bone Crusher Half-Out - 56 Grains
- Bohning Blazer Vanes - 18 Grains (Fletched Only)



DEEP IMPACT

15/64" - HUNTING ARROWS



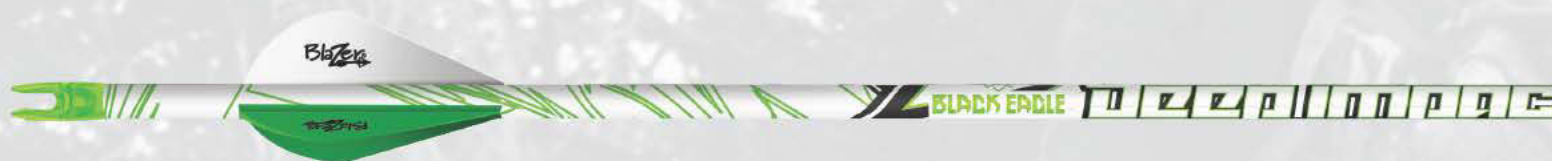
CRESTED FLETCHED & SHAFTS

The name says it all. This incredibly light and strong micro-diameter shaft was developed using cutting-edge carbon manufacturing techniques. This **100% carbon shaft** uses fine-tuned spine-to-weight ratios to maximize speed, kinetic energy, penetration, and also to provide the flattest trajectory possible.

.001 & .003" OR STRAIGHTER **± 1 GRAIN** **WEIGHT TOLERANCE** **32" SHAFT LENGTH**

SPINES: 300-500 (SHAFTS AND FLETCHED)

600-1100 SPINES (SHAFTS ONLY .001) - 700-1200 SPINES COMING SOON



SPINE	INNER DIAMETER	OUTER DIAMETER	GPI
300	.165"	.248"	11.0
350	.165"	.240"	9.6
400	.165"	.233"	8.6
500	.165"	.228"	7.6
600	.165"	.223"	7.0
700	.165"	.218"	6.3
800	.165"	.213"	5.8
900	.165"	.209"	5.2

Note: Cresting adds .01 GPI.

- Black Eagle Arrows Micro Nocks - 8 Grains
- Deep Impact Outsert (Now Included!)
- Bohning Blazer Vanes - 18 Grains (Fletched Only)



X-IMPACT

15/64" - FIELD / HUNTING ARROWS

FLETCHED & SHAFTS

We constructed the X-Impact from the highest quality materials to ensure it's the best micro diameter shaft on the market. This shaft is made of **100% High-Mod Carbon**, which means it's our lightest shaft available to date; this allows for more point weight up front, equating to better flight characteristics and long-range pin point accuracy. It's perfect for any hunter or target shooter who is looking for the highest quality long-range carbon arrow.

.001" OR STRAIGHTER **± 1 GRAIN** **WEIGHT TOLERANCE** **32" SHAFT LENGTH**

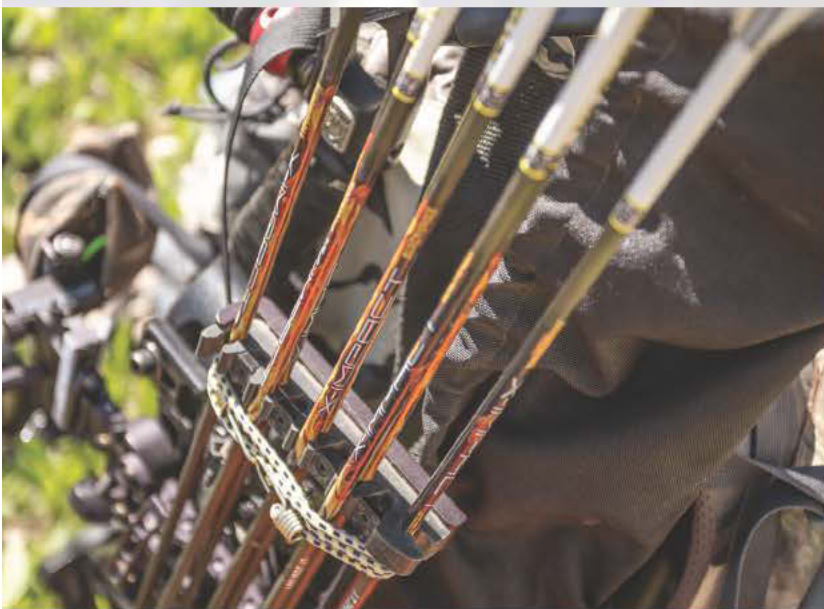
SPINES: 250-500 (SHAFTS AND FLETCHED)
600-1200 SPINES (SHAFTS ONLY .001)





SPINE	INNER DIAMETER	OUTER DIAMETER	GPI
250	.165"	.240"	9.5
300	.165"	.231"	8.1
350	.165"	.228"	7.4
400	.165"	.221"	6.7
500	.165"	.214"	5.8
600	.165"	.214"	5.8
700	.165"	.215"	5.9
800	.165"	.210"	5.4
900	.165"	.209"	5.1
1000	.165"	.210"	5.2
1100	.165"	.214"	5.4
1200	.165"	.213"	5.3

- Black Eagle Arrows Micro Nocks - 8 Grains
- X-Impact Black Aluminium Outsert - 40-44 Gr. | 250-500 Spine
- Bohning Blazer Vanes - 18 Grains (Fletched Only)



INTREPID

NEW FOR 2018

15/64" - FIELD ARROWS

FLETCHED & SHAFTS

The Intrepid arrow was designed for recurve target archers. We built an affordable arrow with Black Eagle Quality designed for the novice and seasoned shooters alike.

+/- .006" OR STRAIGHTER

± 1 GRAIN WEIGHT TOLERANCE

32" SHAFT LENGTH



SPINE	INNER DIAMETER	OUTER DIAMETER	GPI
500	.165"	.233"	8.3
600	.165"	.226"	7.1
700	.165"	.222"	6.4
800	.165"	.218"	6.0
900	.165"	.213"	5.3
1000	.165"	.212"	5.1
1100	.165"	.209"	4.8
1200	.165"	.211"	5.1
1300	.165"	.209"	4.9
1400	.165"	.208"	4.8

- **SHAFTS SOLD IN 5 DOZEN QUANTITIES**
- **FLETCHED SOLD IN 36 PACK BOX**
- Black Eagle Arrows Micro-Nock ST Red - 4 Grains
- AAE EP 1.6" Vanes (Fletched)
- 90-70 Grain Target Points (Fletched)



23/64" - 3D SHAFTS

AVAILABLE AS SHAFTS

This carbon shaft's spine and lightweight GPI make this extremely durable shaft popular among 3-D shooters. As our flagship 3-D shaft, this arrow's speed and accuracy has been a winning combination. Perfect shaft for World Archery, FITA, or NFAA competition.

.001 & .003" OR STRAIGHTER **± 1 GRAIN** **WEIGHT TOLERANCE** **32" SHAFT LENGTH**

SPINE	INNER DIAMETER	OUTER DIAMETER	GPI
250	.315"	.356"	8.6
300	.315"	.353"	7.9
350	.315"	.351"	7.4
400	.315"	.349"	6.9

All components are sold separately. This makes it easy to customize with your choice of bushings, nocks, points, and vanes.



DAN MCCARTHY PREMIUM SIGNATURE CHAMPIONSHIP INDOOR & 3D 100% CARBON ARROWS

.001" OR STRAIGHTER **± 1 GRAIN** **WEIGHT TOLERANCE** **32" SHAFT LENGTH**



PS23

DAN MCCARTHY PREMIUM SERIES

23/64" - 3D COMPETITION SHAFT

SPINE	ID	OD	GPI
250	.315"	.360"	9.0
300	.315"	.356"	8.2
350	.315"	.354"	7.9
400	.315"	.353"	7.3
500	.315"	.349"	7.1

The Dan McCarthy PS23 Premium Signature series **100% carbon shaft** was developed personally by Dan, a multi-time IBO & ASA champion. No expense was spared when developing the tightest tolerance shafts available specifically for the highest levels of competition. Perfect shaft for World Archery, FITA, or NFAA competition.



PS26

DAN MCCARTHY PREMIUM SERIES

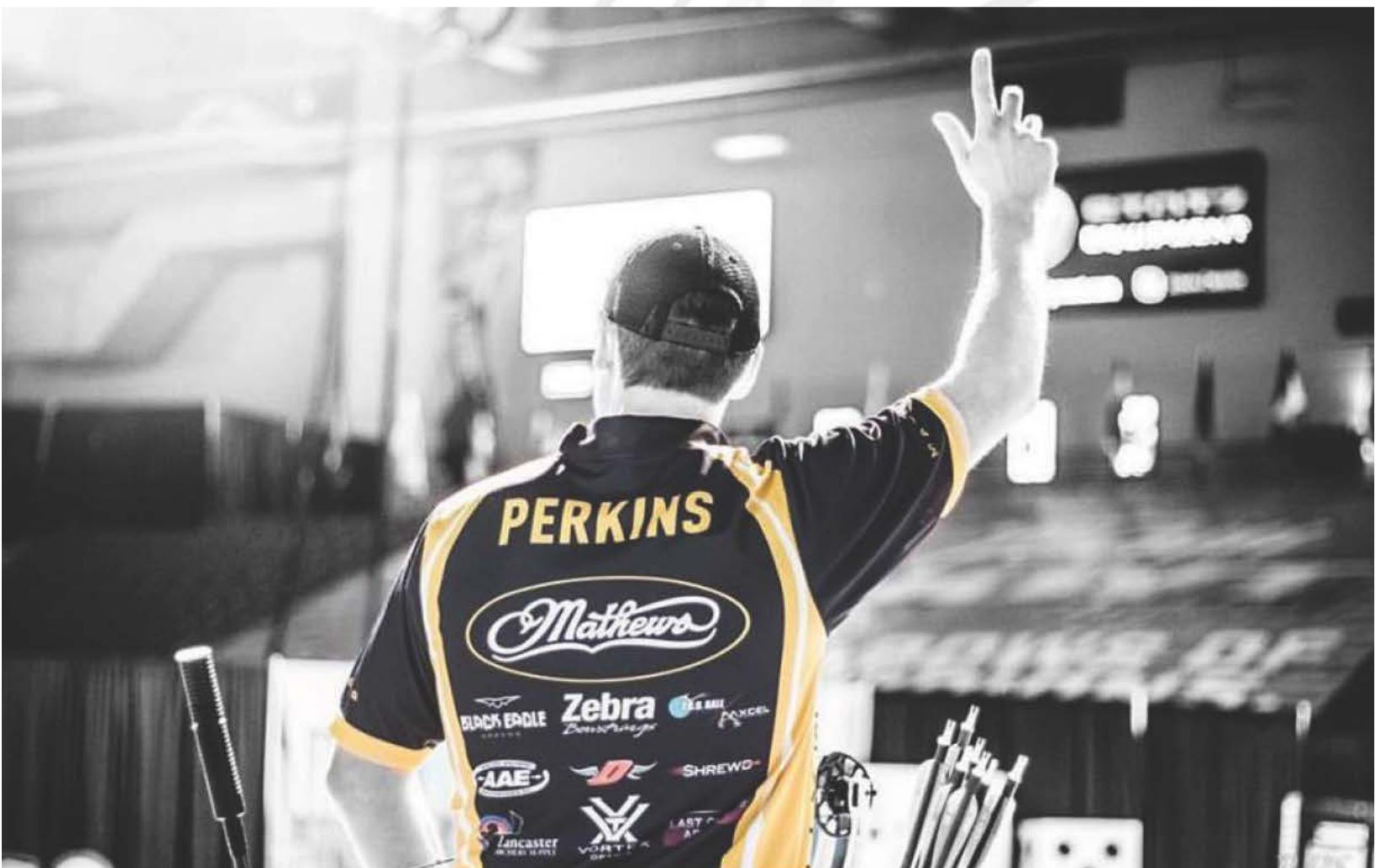
26/64" - HYBRID INDOOR / 3D COMPETITION

SPINE	ID	OD	GPI
250	.370"	.410"	9.6
300	.370"	.408"	8.8
350	.370"	.406"	8.5
400	.370"	.404"	8.2

The Dan McCarthy PS26 Premium Signature series shaft was developed personally by Dan, a multi-time IBO & ASA champion. This ultra tight tolerance shaft was designed for highest levels of competition. **Constructed of 100% carbon** this shaft is tough enough to withstand the harsh punishment in real world tournament conditions. The shafts large 26/64" diameter is ideal for indoor or 3D competition shooting.

2018 LAS VEGAS SHOOT CHAMPION

FACTORY PROSTAFF CHRIS PERKINS



PS27

DAN MCCARTHY SUPER X SIGNATURE SERIES

27/64" - INDOOR COMPETITION SHAFT

SPINE	ID	OD	GPI
300	.380"	.420"	9.6
350	.380"	.417"	9.4

The Dan McCarthy PS27 Super X Premium Signature series **100% carbon shaft** was developed personally by Dan, the 2017 IBO Champion. This shaft was specifically designed for the highest level of indoor competition. The combination of ultra tight .001 or better straightness and ± 1 gr weight tolerances make this the ideal max diameter competition arrow.

ZOMBIESLAYER

CROSSBOW ARROWS



CROSSBOW ARROWS

FLETCHED & SHAFTS

Being 25% Stiffer than the Executioner, the **100% Carbon Zombie Slayer Crossbow Arrows** are Built for accuracy and penetration. These carbon Zombie Slayer Crossbow Arrows are manufactured with the tightest ± 0.001 " straightness tolerances to ensure you never miss that critical head shot. What makes our Zombie Slayers a critical part of your arsenal is the unmatched durability. We test our shafts by shooting through 3/4" pressure-treated plywood and several other materials.

.001 / .003" OR STRAIGHTER **± 1 GRAIN** **WEIGHT TOLERANCE** **18/20/22" SHAFT LENGTH**





SPINE	INNER DIAMETER	OUTER DIAMETER	GPI
18"	.300"	.346"	9.1
20"	.300"	.346"	9.1
22"	.300"	.346"	9.1

- Half Moon Nocks & Flat Nocks (Installed and Removable)
- Zombie Slayer Brass Inserts - (18" Arrow - 80 Grain) (20" Arrow - 110 Grain) (22" Arrow - 92 Grain)
- Bohning 2" Blazer Vanes - 18 Grains



EXECUTIONER



CROSSBOW ARROWS

FLETCHED & SHAFTS

This "killer" **100% carbon crossbow arrow** is designed for superior performance, bringing you speed, kinetic energy, and accuracy. The overall weight of the arrow includes a brass insert for optimal F.O.C. which maximizes accuracy, increases kinetic energy, and minimizes the loss of downrange speed. This is the best crossbow arrow on the planet.

.001 / .003" OR STRAIGHTER **± 1 GRAIN** **WEIGHT TOLERANCE** **18/20/22"** **SHAFT LENGTH**

SPINE	INNER DIAMETER	OUTER DIAMETER	GPI
18-22"	.300"	.346"	9.0





FLETCHED ARROWS

- 18" comes with Half Moon Nocks and Flat Nocks (Installed but Removable)
- 20" (only .001") comes with Half Moon Nocks and Flat Nocks (Installed but Removable)
- 22" (only .001") comes with Half Moon Nocks (Installed but Removable)
- Executioner Brass Inserts **Installed**- (20" - 110 Grain) (18 & 22" - 92 Grain)
- Bohning 3" Vanes on 20" and 22" | Bohning 2" Blazer Vanes on 18", 20", 22"

SHAFTS

All components are sold separately. This makes it easy to customize with brass or aluminium inserts and your choice of nocks.

These bolts work with most major manufacturer crossbows. Check your crossbow manual for arrow weight minimums to make sure you do not void your warranty.



ARROW COMPONENTS

Our components are held to the same superior standard as our arrows, and are crafted from the highest quality material on the market: 70-75 aluminum, 17/4 stainless, 416PH stainless. Each component is designed to perfectly match our shafts, ensuring flawless performance. For more components, check out our store or search for dealers on BLACKEAGLEARROWS.com.

NOCKS

CARNIVORE, ZOMBIE SLAYER, OUTLAW, VINTAGE

STANDARD-NOCK 11 Grains



X-IMPACT, DEEP IMPACT, INSTINCT, INTREPID

M MICRO-NOCK 7 Grains



RAMPAGE, RENEGADE, SPARTAN

R-NOCK 9 Grains



PIN NOCK
4 Grains



2" BLACK EAGLE ARROWS SIGNATURE BLAZER® VANE - 6 Grains

CROSSBOW NOCKS

EXECUTIONER / ZOMBIE SLAYER BOLT



HALF-MOON NOCK
8 Grains

FLAT NOCK
8 Grains

HALF-MOON ALUMINIUM NOCK
18 Grains

CAPTURE NOCK
14 Grains

FLAT ALUMINUM NOCK
19 Grains

NOCK BUSHINGS

18/64" SPARTAN



**STAINLESS STEEL
R NOCK BUSHING**
10 Grains

19/64" CARNIVORE, ZOMBIE SLAYER, OUTLAW, VINTAGE



G/M NOCK BUSHING
14 Grains

23/64" PS23



G/F NOCK BUSHING
14 Grains



STANDARD NOCK BUSHING
16 Grains

26/64" PS26



**CONICAL STANDARD
NOCK BUSHING**
20 Grains



G/M NOCK BUSHING
21 Grains

27/64" PS27



**CONICAL STANDARD
NOCK BUSHING**
22 Grains



G/M NOCK BUSHING
23 Grains

INSERTS / OUTSERTS / HALF-OUTS

15/64" DEEP IMPACT



STAINLESS STEEL OUTSERT
300 Spine 68 Gr. | 350 Spine 67 Gr.



BLACK ALUMINIUM OUTSERT
40-44 Gr. | 300-600 Spine



BLACK ALUMINIUM OUTSERT
40-44 Gr. | 300-500 Spine



STAINLESS STEEL OUTSERT



3 PIECE FOCUS OUTSERT
Stainless Steel / Aluminum



17/64" RAMPAGE, RENEGADE



**150 SPINE PLATINUM
BONE CRUSHING HALF-OUT**
76 Grains / 11/32" End



PLATINUM BONE CRUSHING HALF-OUT
58 Grains



STAINLESS STEEL HALF-OUT
56 Grains



STAINLESS STEEL INSERT
28 Grains

19/64" CARNIVORE, ZOMBIE SLAYER, OUTLAW, VINTAGE



BRASS INSERT
42 Grains



ALUMINIUM INSERT
14 Grains

23/64" PS23



ALUMINIUM INSERT
31 Grains

26/64" PS26



ALUMINIUM INSERT
48 Grains

CROSSBOW



ALUMINIUM INSERT
30 Grains



BRASS INSERT
80/92/110 Grains

INSERT WEIGHTS



SCREW-IN INSERT WEIGHTS
30/50/75 Grains



SCREW-IN INSERT WEIGHTS
10/20 Grains, Stackable

POINTS

15/64" X-IMPACT



STAINLESS STEEL GLUE-IN BREAK AWAY POINTS

140/120/90 Gr. | 10 Gr. Weight Breaks

15/64" DEEP IMPACT



STAINLESS STEEL GLUE-IN BREAK AWAY

140 Gr. | 20 Gr. Weight Breaks

STAINLESS STEEL GLUE-IN BREAK AWAY

120 Gr. | 20 Gr. Weight Breaks

17/64" RAMPAGE, RENEGADE



STAINLESS BREAK AWAY POINTS

120/140 Gr. | 10 Gr. Weight Adjustable

18/64" SPARTAN



STAINLESS BREAK AWAY POINTS

140 Gr. | 10 Gr. Weight Adjustable

19/64" CARNIVORE, ZOMBIE SLAYER, OUTLAW, VINTAGE



STAINLESS BREAK AWAY POINTS

100/120 Gr. | 10 Gr. Weight Breaks



SCREW-IN ADJUSTABLE POINTS

50/70 Gr. | 5/10 Gr. Weight Adjustable



SCREW-IN INSERT/POINT WEIGHTS

5/10/30/50/100 Grains, Stackable

23/64" PS23



STAINLESS NOCK CRUSHERS

100/150/200 Grains



STAINLESS GLUE-IN POINTS

100/120 Grains



SCREW-IN ADJUSTABLE POINTS

80/100/120 Grains

26/64" PS26



STAINLESS NOCK CRUSHERS

100/150/200 Grains



STAINLESS GLUE-IN POINTS

80/100/120 Grains

27/64" PS27



STAINLESS NOCK CRUSHERS

150/200/300 Grains



STAINLESS GLUE-IN POINTS

100/150 Grains

15/64 - 19/64"



5/16 FIELD POINTS

100/125 Grains



5/16 BULLET POINTS

100/125 Grains

23/64 - 26/64"



11/32 FIELD POINTS

75/100/125 Grains



11/32 BULLET POINTS

100/125 Grains

PIN BUSHINGS

27/64" PS27



ALUMINIUM PIN BUSHING
22 Grains

26/64" PS26



ALUMINIUM PIN BUSHING
19 Grains

23/64" PS23



ALUMINIUM PIN BUSHING
16 Grains

19/64" CARNIVORE, ZOMBIE SLAYER, OUTLAW, VINTAGE



ALUMINIUM PIN BUSHING
14 Grains

17/64" RAMPAGE, RENEGADE



ALUMINIUM PIN BUSHING
19 Grains

15/64" X-IMPACT, DEEP IMPACT



ALUMINIUM PIN BUSHING
12 Grains

BRANDED GEAR

We stock gear that looks great, is durable, and is ultra-light. Our apparel is perfect for sending carbon down-range. For more Black Eagle Arrows gear, check out our store or search for dealers on BLACKEAGLEARROWS.com.



NEW BLACK EAGLE BOW CASE



NEW BLACK EAGLE BOW SLING



LEGACY TEE



NEXT LEVEL HUNTING T-SHIRT



BRANDED TEAM JERSEY



BRANDED HOODED SWEAT SHIRT



NEXT LEVEL LONG SLEEVE HOODIE



BRANDED QUIVER



ARROW SELECTION GUIDE

THESE ARE GENERAL GUIDELINES. PLEASE SEE YOUR LOCAL BLACK EAGLE ARROWS DEALER FOR PROPER ARROW FITTING, OR CONTACT US DIRECTLY FOR ASSISTANCE.

This chart is based on a 100 grain point. If you use a 125 grain point, you may need to use a stiffer spine. If you use a 85 grain point, you may need to use a weaker spine.

In order to properly select the right arrows for your specific bow, you need to consider draw weight and arrow length.

As draw weight increases, so should arrow rigidity (spine). Also, we strongly recommend that you use an arrow with at least 5 grains of weight per pound of draw weight (if you are shooting a 60 lb. bow, use an arrow of no less than 300 grains). This includes your field point or broadhead.

For practical purposes, we use arrow length above draw length. Since the recent trends have been toward drop-away style arrow rests which are mounted to the rear of the riser, arrow length and draw length are no longer evenly proportional. Given a specific arrow spine, an arrow that is shorter will be more rigid than a shaft of the same spine that is longer. For example, if you have a 60 lb. bow with a 24" arrow, you would need a more flexible shaft than a 60 lb. bow with a 30" arrow.



COMPOUND SIZING CHART

RECURVE	COMPOUND	ARROW LENGTH									
BOW WEIGHT	BOW WEIGHT	23"	24"	25"	26"	27"	28"	29"	30"	31"	32"
10-15		1000	1000	900	900	800	800	800	700	700	700
15-20		1000	900	900	800	800	800	700	700	700	700
20-25		900	900	800	800	800	700	700	700	700	600
25-30		900	800	800	700	700	700	700	600	600	600
30-35	15-20	800	800	700	700	700	600	600	600	600	600
35-40	20-25	800	700	700	700	600	600	600	500**	500**	500**
40-45	25-30	700**	700**	700**	600**	600**	600**	500**	500**	500**	500**
45-50	30-35	700**	700**	600**	600**	600**	500**	500**	500*	500**	400
50-55	35-40	700**	600**	600**	600**	500**	500**	500**	500**	400	400
55-60	40-45	600**	600**	500**	500**	500**	500**	500**	400	400	400
60-65	45-50	600**	500**	500**	500**	500**	400**	400	400	400	400
	50-55	500	500	500	400	400	400	400	400	350	350
	55-60	500	500	400	400	400	400	350	350	350	300
	60-65	500	400	400	400	350	350	350	350	300	300
	65-70	400	400	350	350	350	300	300	300	250	250
	70-75	350	350	350	300	300	300	250	250	250	250
	75-80	300	300	300	300	250	250	250	250	250	250
	80-85	300	300	300	250	250	250	250	250	150	150
	85-90	300	250	250	250	150	150	150	150	150	150
	90-95	250	250	250	150	150	150	150	150	150	150

** The UL 30-50 shafts are also available for use in this spine selection, depending on the shaft selection and your setup.

Please visit an authorized dealer for proper selection or call 678-208-3429

These are based on a 100 gr. point. If using a 125 gr. point or more you may need to use a stiffer spine. If using a 85 gr. point or less you may need to use a weaker spine.

TRADITIONAL SIZING CHART

RECURVE FINGER RELEASE			ARROW LENGTH												LONGBOW FINGER RELEASE		
*PEAK BOW WEIGHT LBS			MEASURED FROM THROAT OF NOCK TO POINT TIP												*PEAK BOW WEIGHT LBS		
*POINT WEIGHT															*POINT WEIGHT		
100 Grains	150 Grains	200 Grains	23"	24"	25"	26"	27"	28"	29"	30"	31"	32"	33"	34"	100 Grains	150 Grains	200 Grains
<25	<25	<25	800	800	800	800	800	800	800	800	500	500	500	400	30-35	25-30	<25
<25	<25	25-30	800	800	800	800	800	800	800	500	500	500	500	400	35-40	30-35	25-30
<25	25-30	30-35	800	800	800	800	800	800	500	500	500	500	400	400	40-45	35-40	30-35
25-30	30-35	35-40	800	800	800	800	800	500	500	500	500	400	400	400	45-50	40-45	35-40
30-35	35-40	40-45	800	800	800	800	500	500	500	500	400	400	400	400	50-55	45-50	40-45
35-40	40-45	45-50	800	800	800	500	500	500	500	400	400	400	400	350	55-60	50-55	45-50
40-45	45-50	50-55	800	800	500	500	500	500	400	400	400	350	350	350	60-65	55-50	50-55
45-50	50-55	55-60	800	500	500	500	500	400	400	400	350	350	350	350	65-70	60-65	55-60
50-55	55-60	60-65	500	500	500	400	400	400	400	350	350	350	350	300	70-75	65-70	60-65
55-60	60-65	65-70	500	500	400	400	400	350	350	350	350	300	300	300	75-80	70-75	65-70
60-65	65-70	70-75	500	400	400	400	350	350	350	300	300	300	300	250	80-85	75-80	70-75
65-70	70-75	75-80	400	400	400	350	350	300	300	300	300	250	250	250	85-90	80-85	75-80
70-75	75-80	80-85	400	400	350	350	300	300	300	300	300	250	250	250	90-95	85-90	80-85
75-80	80-85	85-90	400	350	350	300	300	300	300	300	300	250	250	250	95-100	90-95	85-90

Please visit an authorized dealer for proper sizing or see our sizing chart on BlackEagleArrows.com

SAFETY INFORMATION

PROPER ARROW SPINE SELECTION:

SHOOTING AN UNDER-SPINE ARROW CAN/WILL SIGNIFICANTLY INCREASE THE RISK OF INJURY TO THE SHOOTER AND YOUR EQUIPMENT.

Shooting a weaker spine arrow to get a few feet per second is a great risk. The added speed and stress on the under-spined carbon arrow shaft will, overtime, significantly increase the risk to the shooter and anyone in the vicinity. We have gone through great lengths to ensure our spine chart is accurate. Our arrow spine chart matches our arrows abilities in regards to your specific draw weight and draw length. It is vitally important that arrow safety start with the proper arrow selection.

INSPECT COMPLETE ARROW, FLEX AND TWIST EACH SHAFT BEFORE EACH SHOT:

It is critical to carefully inspect each shaft, for any damage to the carbon, before each shot. If there are any irregularities in the carbon, it may cause bodily injury, and may also affect performance. Any hard surface may cause damage to the carbon, including lost points buried in targets.

BE SURE TO INSPECT COMPLETE ARROW, FLEX AND TWIST EACH SHAFT BEFORE EACH SHOT.

IT IS CRITICAL YOU INSPECT THE COMPLETE ARROW, FLEX AND TWIST EACH SHAFT BEFORE EACH SHOT. THIS BECOMES CRITICAL IF YOU SHOOT GROUPS OR TOURNAMENT ARCHERY WHERE ARROWS AND NOCKS ARE GETTING BANGED UP AND BROKEN.

TO PERFORM AN ARROW INSPECTION:

BE SURE TO USE EYE PROTECTION DURING THIS PROCESS -

It is critical to carefully inspect each shaft, for any damage to the carbon, before each shot. If there are any irregularities in the carbon, it may cause bodily injury, and may also affect performance. Any hard surface may cause damage to the carbon, including lost points buried in targets.

If you suspect an arrow has been damaged in any way, immediately discard that shaft. Do not shoot a damaged arrow - it can cause injury to you and those around you.

Grasp the arrow shaft at each end (the closer to the each end the better) and bend the shaft creating no more than a 1-2" arch. When bending the shaft listen for any cracking while monitoring for any cracks or nicks. Rotate the shaft slightly and repeat this process until you have completed this for the entire arrow. Twist the shaft and listen for any cracking while monitoring for any cracks or nicks.

Review the whole shaft for any imperfections, paying careful attention to include the nock itself. Everyone loves to shoot groups and the nock being intact and free from any cracks or damage is critical to arrow safety.

If you suspect an arrow has been damaged in any way immediately discard this shaft. Do not shoot a damaged arrow or it will cause injury to you and those around you.

AWARENESS OF YOUR SURROUNDINGS:

Always be aware of what resides behind your target. Never shoot an arrow without a safe shooting lane.

Never shoot your bow without getting your bow inspected, including getting your arrow shafts measured by an experienced professional. Failure to cut your arrow shafts to the proper length will result in overdraw which may cause severe injury or death. Always adjust your arrow rest to accommodate the diameter of your arrow shafts - not doing so may cause severe injury or death.

Zombie Slayers are not toys. These are real arrows and crossbow bolts intended only for real zombies, walkers, living dead, etc. Not for use on living humans.

ULTRA-LIGHTWEIGHT SHAFTS:

This 30-50 lb ultra-lightweight shaft was designed to be shot from bows with a draw weight between 30-50 lb. Do not exceed 50 lb draw weight limit, or it may damage the shaft and cause serious injury to you or others around you. Always inspect complete arrow, flex and twist shaft before each shot. Do not shoot damaged shafts.

SHAFT CUTTING WARNING:

Only use a arrow shaft cutter designed to cut carbon shafts. Carbon shaft saws are designed to cut at a specific RPM that will not damage the shaft. Using a shaft cutter not designed for carbon will destroy a carbon arrow shaft.

Never aim your bow toward any person, animal, or property as it can cause serious injury, damage, or death. Always be sure to be aware of your surroundings as arrows can deflect off a hard surface and cause unintended injury or death.

BLACKEAGLEARROWS.COM

